



The Adjustable Bed That Fits Your Lifestyle

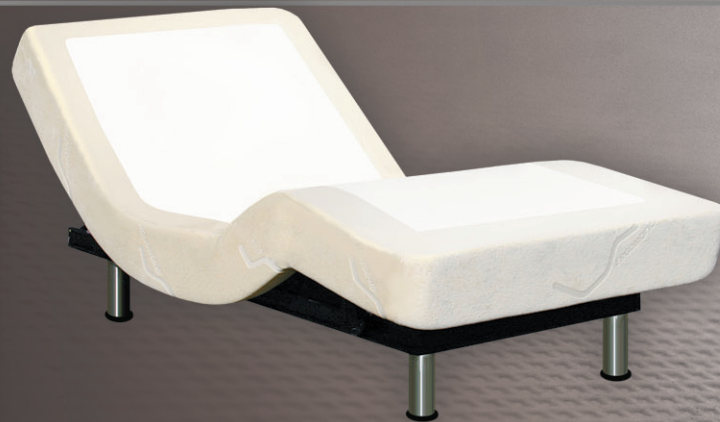
Designed with the highest level of aesthetic appeal in mind, the 400 Series offers the consumer an adjustable foundation filled with features and benefits. The fit and finish make it look like an ordinary bed or box spring, making it your secret that it is an adjustable bed. Taking pleasure in any position while watching TV, reading a book or even working on your laptop is only one of the many benefits of the 400 Series.

Design & Quality Features

- Pre-set Zero Gravity position that offers many health benefits
- Flat button for your convenience
- Massage option with different intensities and timer
- Wireless or wired backlit remote
- Removable legs for multiple applications; operates without legs
- Available in all sizes
- 20 year limited warranty backed by industry leading customer service

Dimensions

- Twin Long 38"x 8"x 80", 138 lbs - Box 42"x 8.5"x 84"
- Full Long 54"x 8"x 80", 183 lbs - Box 58"x 8.5"x 84"
- Queen 60"x 8"x 80", 200 lbs - Box 63.5"x 8.5"x 84"
- Queen Split 30"x 8"x 80" 113 lbs - Box 33"x 8.5"x 84"
- Cal King Split 36"x 8"x 84" 132 lbs - Box 39.5"x 8.5"x 84"



series 400



Fax 805.968.0653

Phone 1.800.550.ERGO

Email info@ergomotion.us

Website www.ergomotion.us

Mail 55 Castilian Drive, Suite 148 Santa Barbara, CA 93117